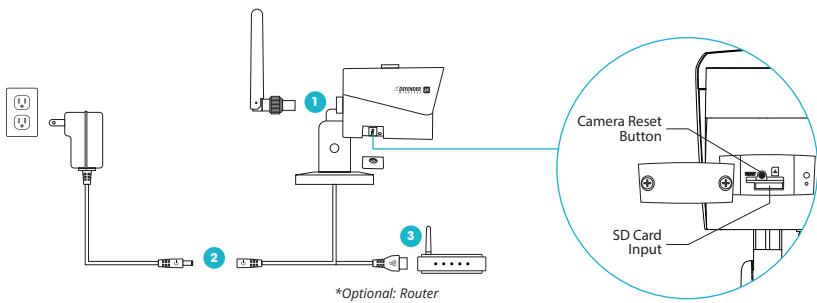




IP Camera Quick Start Guide IP2KCB1

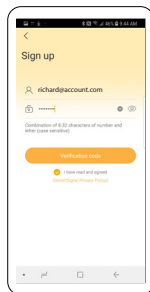
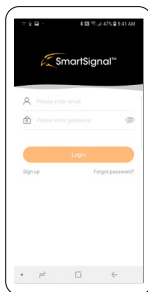
GETTING STARTED

- 1 Connect the antenna to the camera.
- 2 Power on the camera by connecting the camera cable to the adaptor
- 3 Optional: If there is no wifi connectivity in the area, please connect the camera network cable to the router*.

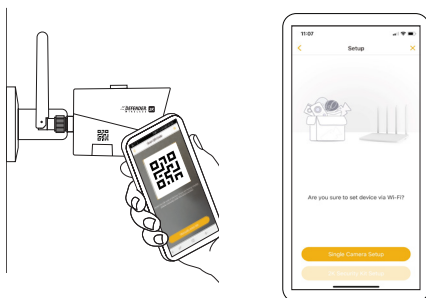
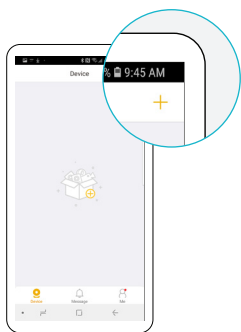


MOBILE AND CAMERA SET UP

- 1 Download the free **Defender Smart Signal App** on the Android Play store or Apple store.
- 2 Follow the steps outlined in the app to create your account.



- 3 Once your account is activated, enter the app. Select the Devices option. Tap the plus sign (+) to add a device.
- 4 Scan the QR code on your camera and follow the instructions on the app. Select **"Single Camera Setup"**.



READY TO GO

Your camera should now be ready and you should see the below view when you select the camera.

You can now mount your camera in the desired location.



1. Camera information
2. Motion detect on (yellow) /off
3. Device selection
4. Alerts on movement detected
5. Account information and setting

